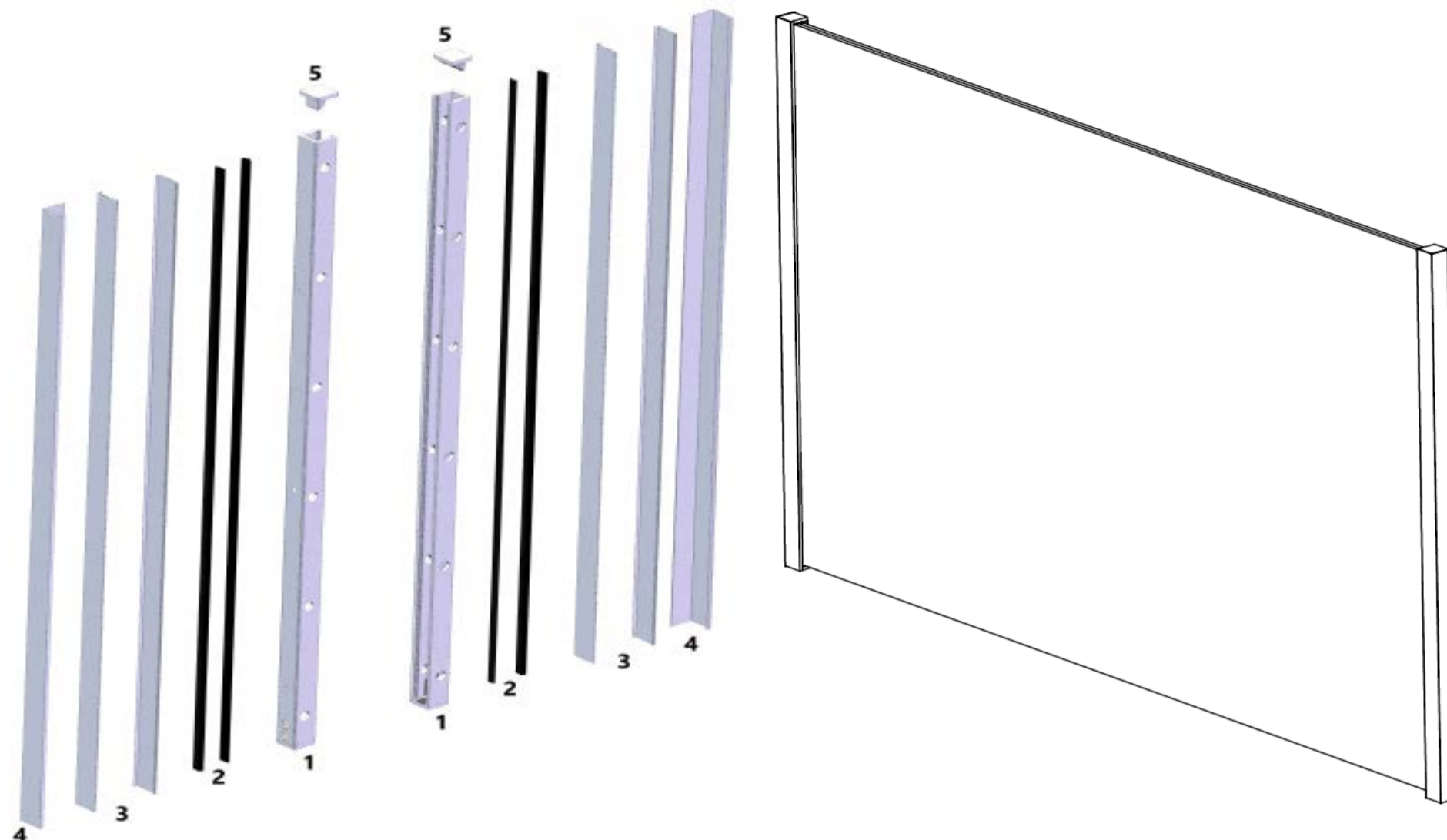


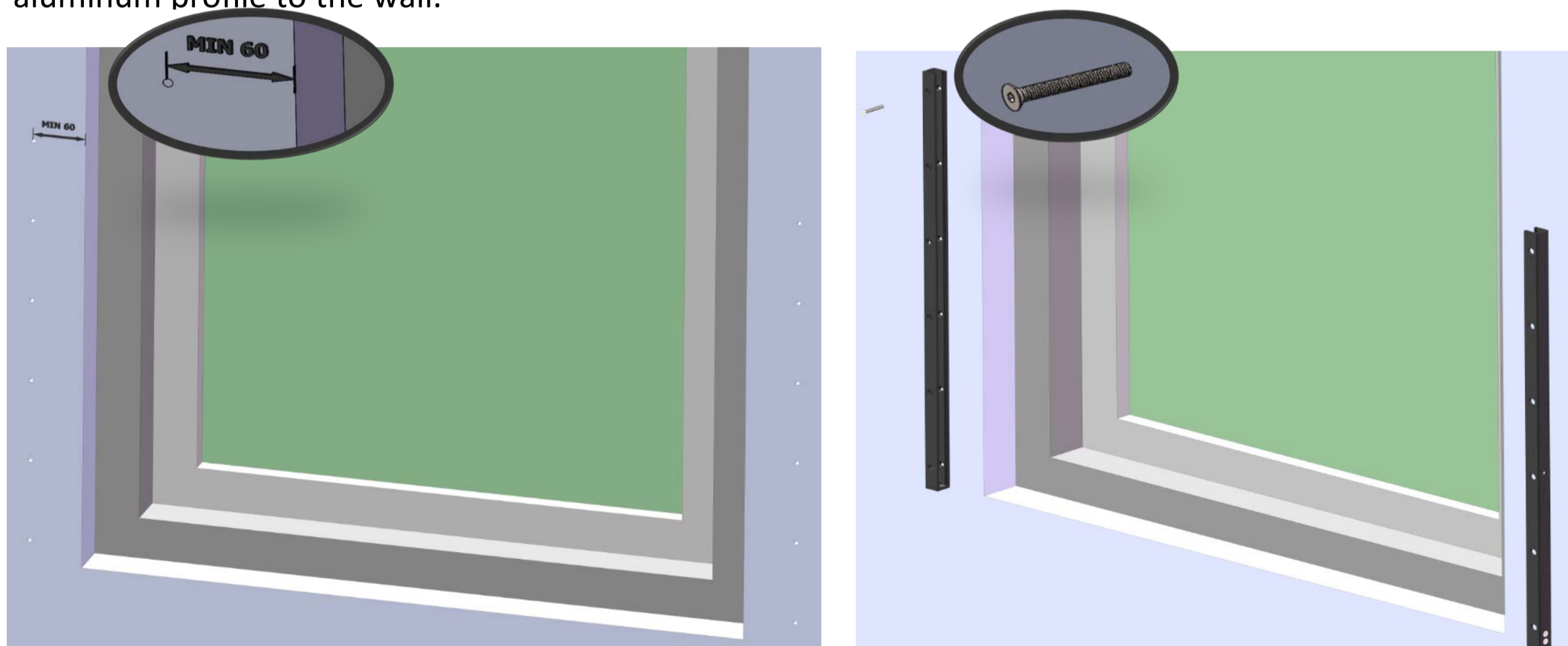
ALUMINUM JULIET BALCONY-SIDE MOUNT

COMPONENT OVERVIEW

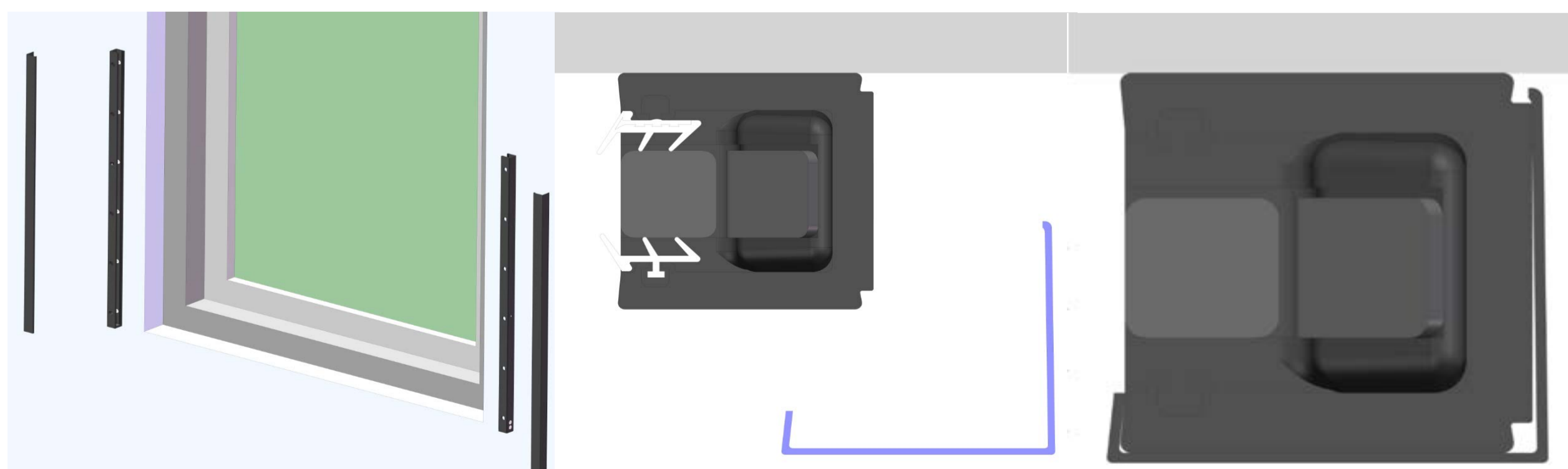
- 1: 2x Aluminium Profiles
- 2: 2x Rubber Sets
- 3: 4x Flat Slim Cover Profiles
- 4: 2x L-shaped Cover Profiles
- 5: 2x End caps



Step 1. Use drill bit to predrill holes for drop in anchors or screws (depending on the substrate), fix the aluminum profile to the wall.

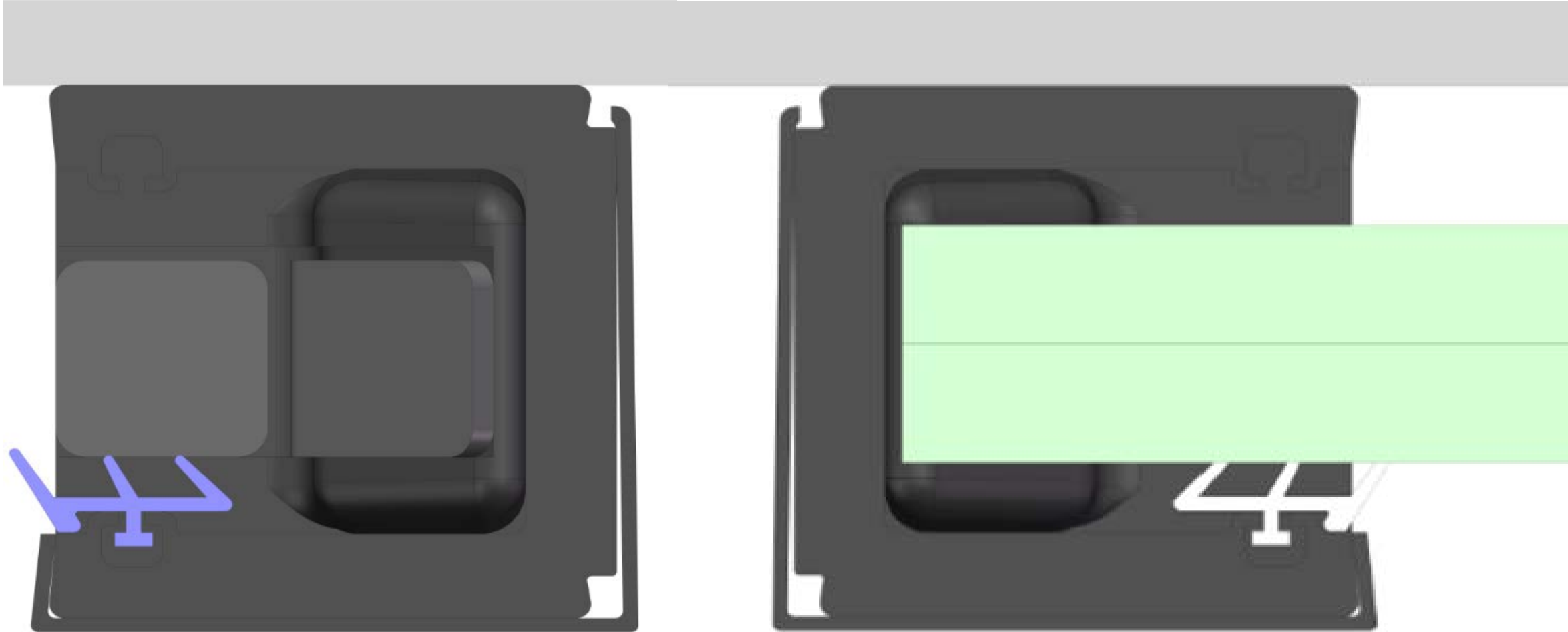


Step 2. Install the L shape cladding onto the aluminum profiles.

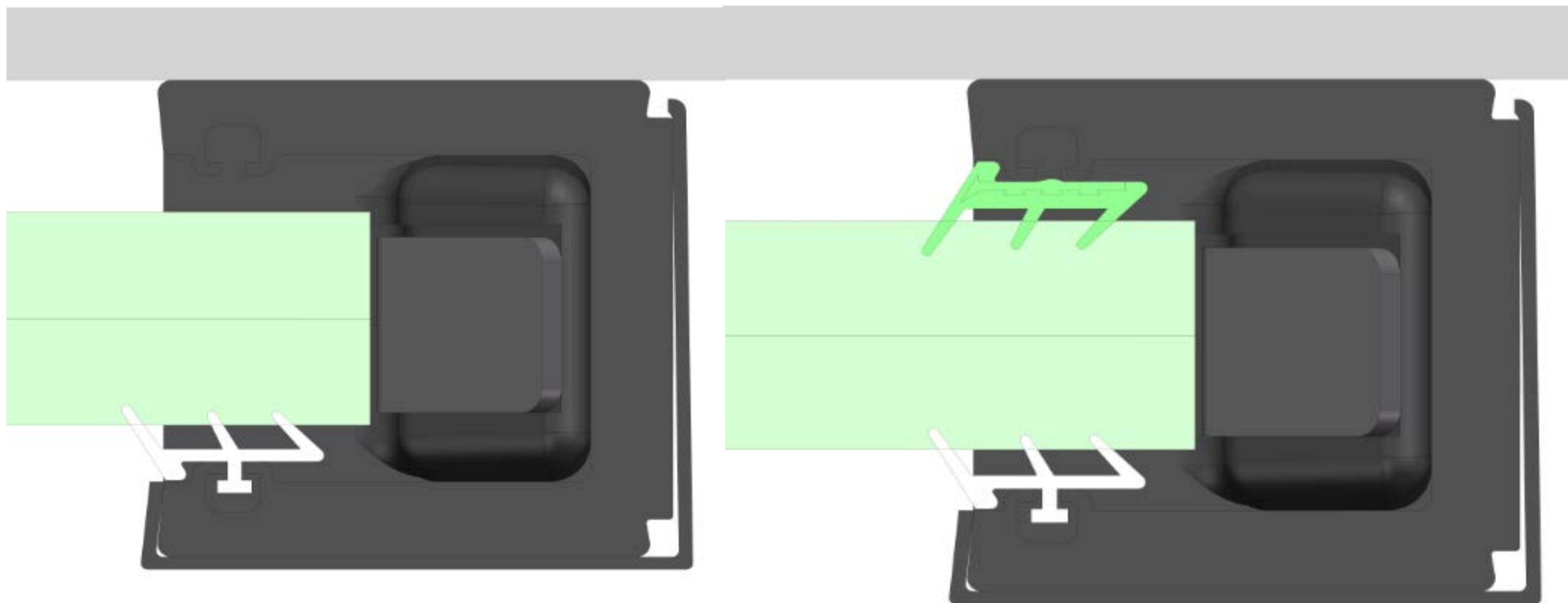


ALUMINUM JULIET BALCONY-SIDE MOUNT

Step 3. Install the outer glass sealing strip and then install the glass panel.



Step 4. Install the inside glass sealing strip.



Step 5. Install the end cap.

